



MONTHLY MEMBERSHIP PROGRESS REPORT

District 321 D

Results as of: 05/31/2018

GMT: ANIL TULSYAN

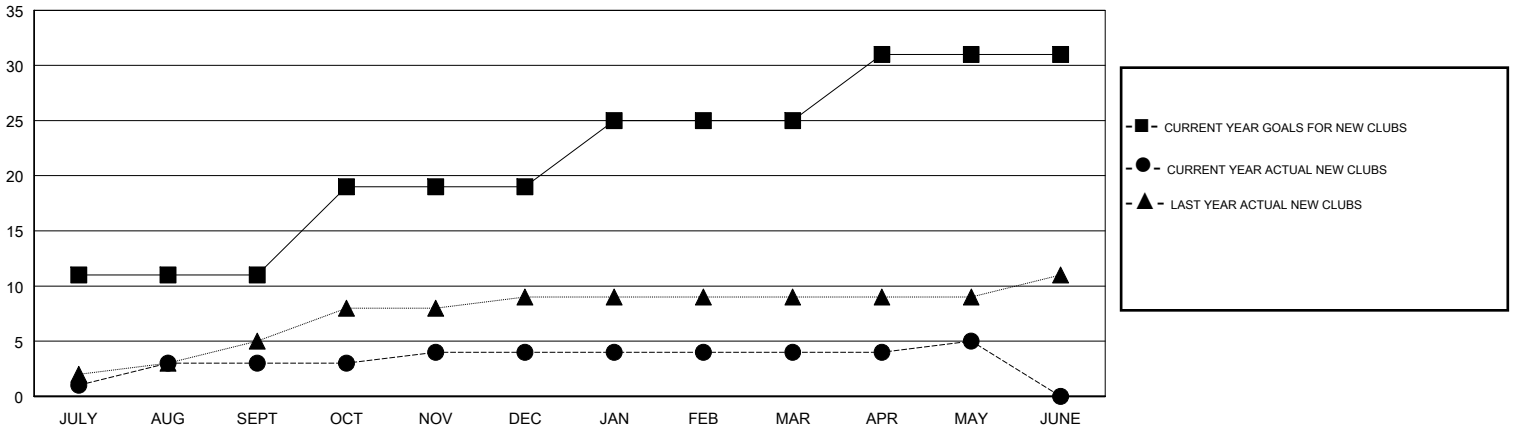
LOCATION INDIA

GMT CA

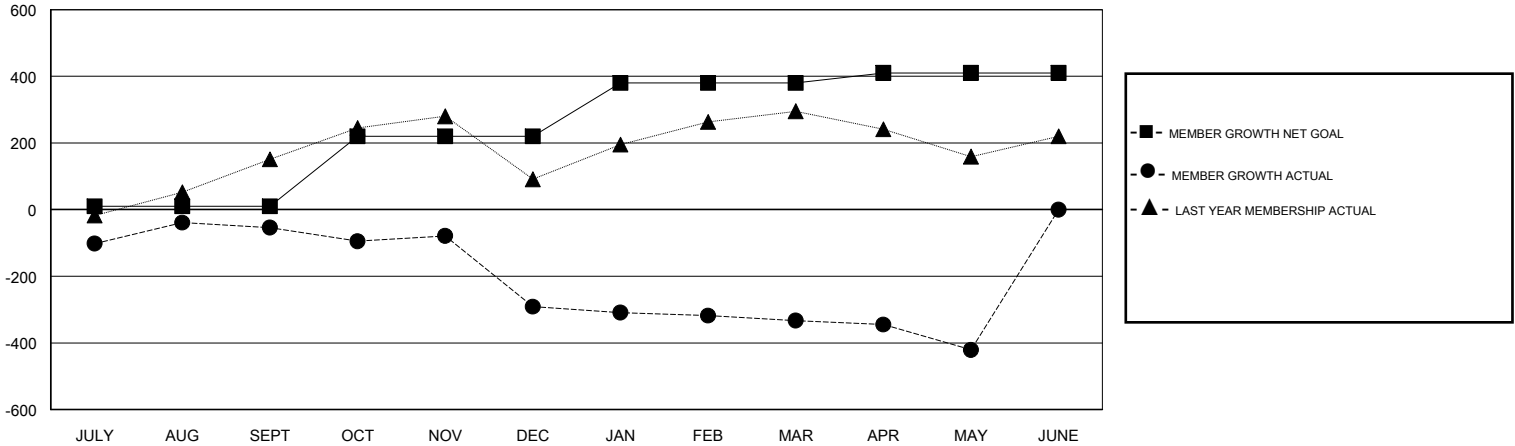
Clubs			
RESULTS FOR 2017-2018			
QUARTER	NEW CLUB GOAL	NEW CLUBS	DROPPED CLUBS
JULY/AUG/SEPT	11	3	2
OCT/NOV/DEC	8	1	10
JAN/FEB/MAR	6	0	1
APR/MAY/JUNE	6	1	0

Members			
RESULTS FOR 2017-2018			
QUARTER	MEMBER GROWTH NET GOAL	MEMBER GROWTH ACTUAL	DROPPED MEMBERS ACTUAL (including transfers)
JULY/AUG/SEPT	10	270	274
OCT/NOV/DEC	210	103	329
JAN/FEB/MAR	160	225	213
APR/MAY/JUNE	30	90	164

GOALS AND ACTUAL NEW CLUBS CUMULATIVE



GOALS AND ACTUAL MEMBERS CUMULATIVE



DROPPED CLUBS: 13	87 CLUBS OF 146 ADDED 1 OR MORE NEW MEMBERS	<u>GENDER DISTRIBUTION</u> MALE 3,572 (75.60%) FEMALE 1,153 (24.40%) Women Percentage Fiscal Year Goal: 30%
<u>DROPPED MEMBERS</u> DECEASED 4 CLUB CANCELLED 244 OTHER 732 TOTAL 980	CLICK HERE FOR CUMULATIVE MEMBERSHIP DATA	TOTAL FAMILY UNIT MEMBERS 2,232 FAMILY MEMBERS PAYING HALF DUES 1,246